

AggRAM Platelet Aggregometer



AggRAM Platelet Aggregometer

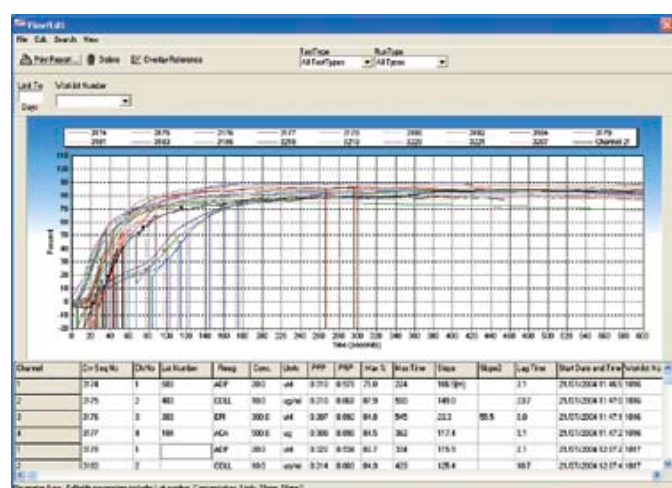
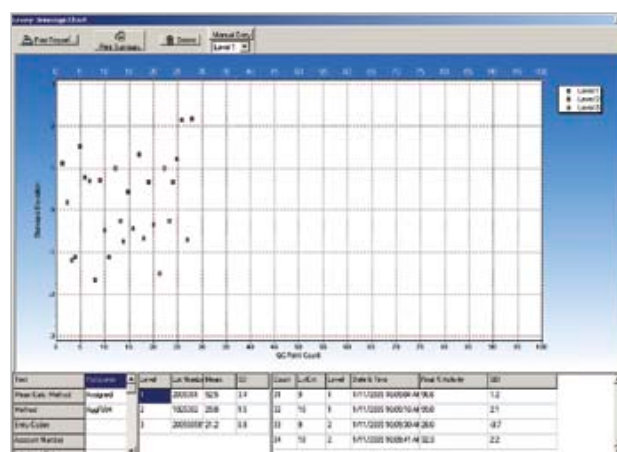


Aggregation testing for the modern laboratory

The AggRAM offers fully customisable platelet aggregation and ristocetin cofactor testing by combining a high performance analyser with powerful software that allows up to 21 patient results to be overlayed and compared simultaneously.

- **4 or 8 Channels** – Fully flexible, multiple agonist configurations and concentrations
- **Flexibility** – Customise your assay test sequence, calibration, dilutions, volumes, run times, display parameters, input additional agonists and create new screens
- **Half-volume** – Fully optimised half volume settings, including programmable stirrer speed
- **Powerful data handling** – Automatic calculation of slope, max% aggregation, time to max aggregation, lag phase, secondary slope and area under the curve (research use only) with full manual edit options
- **Security** – Operator log on with password level protection
- **Database** – Extensive database for patient results, quality control and standards. Data retrieval with the safety of full automatic backup

- **Interface** – LIMS bi-directional host interface
- **Quality control** – Evaluation and graphical Levy-Jennings display of QC data based on assigned Westgard rules with integrated corrective action log



Class-leading analysis software

- **Overlay and compare up to 20 previous results** with the current test – determine ranges for normal results using normal/abnormal data
- **Export** result data to universal spreadsheet or PDF format, allowing free interchange of results with colleagues
- **Flexible working** – enter patient demographics either before or after results, allowing you to include diagnoses in reports
- **Customised reports** – Include data from one channel or four, one patient or the whole run, retrieve archived data to profile individual patients

AggRAM Assays

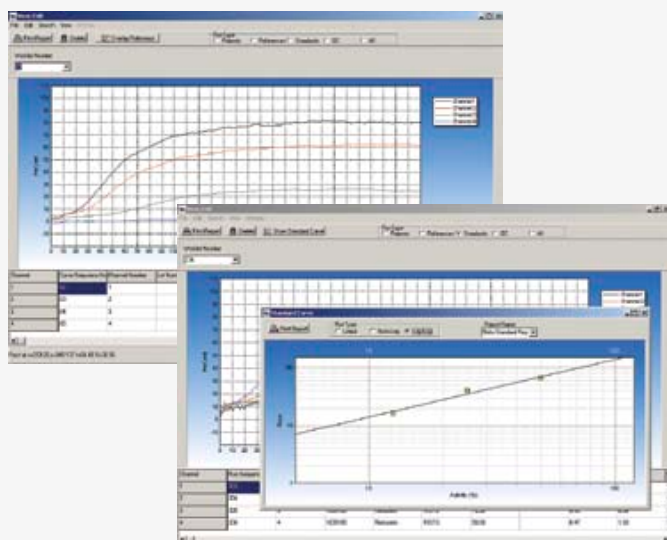


Catalogue numbers

Platelet Aggregation Assay Kit	5369
Ristocetin (15mg/ml)	5199
ADP	5366
Epinephrine	5367
Collagen	5368
Arachidonic Acid	5364

Platelet aggregation

- ▶ Customise and define your multi agonist panel, reagent name, concentration, units, test sequence and secondary slope extrapolation, reaction volumes, run times and display parameters
- ▶ Automatic calculation of slope, max % aggregation, time to max aggregation, lag phase, secondary slope and area under the curve (research use only) with full manual edit options and smooth data function
- ▶ High quality results with unsurpassed precision
- ▶ CVs <3% - max% aggregation
- ▶ Store and overlay up to 21 aggregation reference curves from the AggRAM database
- ▶ Full range of high quality aggregation reagents.



Catalogue numbers

Ristocetin Cofactor Assay Kit (60 tests)	5370
Ristocetin (10mg/ml)	5372
Lyophilised Platelets (5 × 5ml)	5371
Lyophilised Platelets (5 × 10ml)	5356
Ristocetin Cofactor Abnormal Control	5373
SARP Reference Plasma	5185
Tris-Buffered Saline	5365

Ristocetin cofactor

- ▶ Customise and define your assay including test sequence, calibration standards and dilutions, reaction volumes, run times and display parameters
- ▶ Calibration via a four-point curve or three-point plus quality control
- ▶ Results expressed graphically in raw data or plotted directly against the calibration curve
- ▶ Define your quality control material and selectively assign Westgard rules. QC software includes automatic error messages and an integrated corrective action log
- ▶ Quality control data is evaluated and displayed graphically using Levy-Jennings charts. High quality results with unsurpassed precision. Within run CVs <5%
- ▶ Full range of high quality Ristocetin Cofactor assay reagents

AggRAM Catalogue numbers



Description	Cat. no.
AggRAM Analyser (plus software only)	1487
AggRAM Analyser (including PC and software)	1487PC
AggRAM Cuvettes (x200)	1473
AggRAM Stir Bars (x30)	1489

AggRAM Specifications

Test Types:	Platelet Aggregation and Ristocetin Cofactor
Absorbance Range:	0.0 to 2.0 OD
Measuring Wavelength:	650 nm
Optical Chambers per module:	Four chambers for combined or individual measurements
Cuvettes:	8 mm × 60 mm (siliconised glass)
Stir Bars:	3.5 mm × 4 mm (coated magnet)
Incubation and Reaction Temperatures:	37°C +/-1°C
Graphs:	-20% to 110% activity (+/-0.5%) versus time
Instrument Operating Environment:	Ambient Temperature Range 15°C to 30°C (59 to 86°F)

Input Power:	110/220 Vac, 50/60 Hz, 1200 Watts Maximum
Dimensions:	6" (15.24 cm) tall × 10" (25.40 cm) wide × 17" (43.18 cm) deep
Weight:	< 15 lbs (6.75 kg)

Computer Minimum Specifications:

- 800 MHz or higher processor (Intel Pentium/Celeron family processor recommended)
- 64 MB or higher recommended of RAM.
- 1.5 GB of available hard disk space.
- Microsoft © Windows © 2000, XP Operating Systems, CD-RW drive.
- Super VGA (800 x 600) or higher resolution video adapter monitor.
- Keyboard and Microsoft Mouse or compatible pointing device.
- Optional - Handheld Wedge Type Bar Code Scanner (Unitech or compatible) capable of reading: Code 39, Codabar, EAN 128, Interleaved 2 of 5, Code 128.

Helena Biosciences Europe
Queensway South
Team Valley Trading Estate
Gateshead
Tyne and Wear
NE11 0SD

Tel +44 (0)191 482 8440
Fax +44 (0)191 482 8442
Email info@helena-biosciences.com

www.helena-biosciences.com

